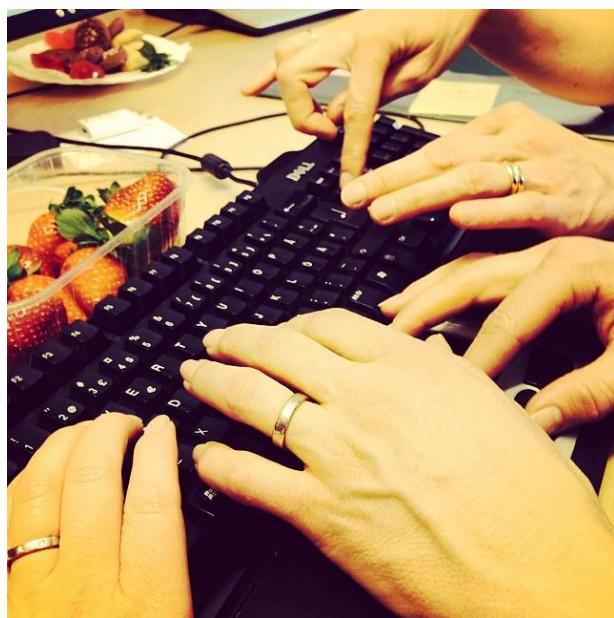


TNC in Sweden 2014-2020

TNC Fair in Jänedä,
Estonia

2016 08 24-25



Network goals and aims

- Starting TNC projects early
- Minimum 40 TNC:s during the period
- At least 30 SE LAGs involved
- Avoid hurdles
- Help if problems occur
- Increased competence



Priorities and budget

- No main priorities
- The LAG strategy is the key
- The benefit has to come in the own territory
 - But the activities can be elsewhere
- Budget for cooperation measure is set in the LDS
- Different partners can use different EU funds in the same project
- Each partner makes their own application to their own LAG
 - For their own expenses and part of common costs, like coordination



Cooperation is possible with

- LAG:s, FLAG:s, “LAG-like” groups and Urban LAG:s, even in 3:rd countries
- Other actors than LAG can be owners



Schedules and deadlines

- Open for application continuously
- LAG:s have their own decision rounds or calls for proposals
- The aim is that TNC projects within EAFRD and EMFF will have a decision at the latest 4 months after application



Preparation and preliminary visits

- Preliminary visits with a clear project idea can be funded and also other preparation costs
 - There has to be a plan to agree on theme and goals for the TNC with a activity plan an budget, maybe even a project agreement
- No special NSU cheques for start up visits



How to find partner in SE

- Contact us at the NSU
- We will post your search at our [website](#)
- Plans for a special advertise page for LAGs
- Waiting also for ENRD partner search database
- Planning to have some "TNC-coordinators"



Differences – hurdles?

- From which date can a project count its expenses? Application date och formal decision date by the MA?
- Has the agreement to be signed with the MA instead of the project partner?
- Are eligible costs the same?
- Simplified cost options or not?
- Are there revenues in the project and what about private financing?
- What about VAT? Are the partners registered for VAT or not?
- Is it possible with contribution in kind? How should they be verified?
- Are the partners under the rules of public procurement? Swedish LAGs are.

